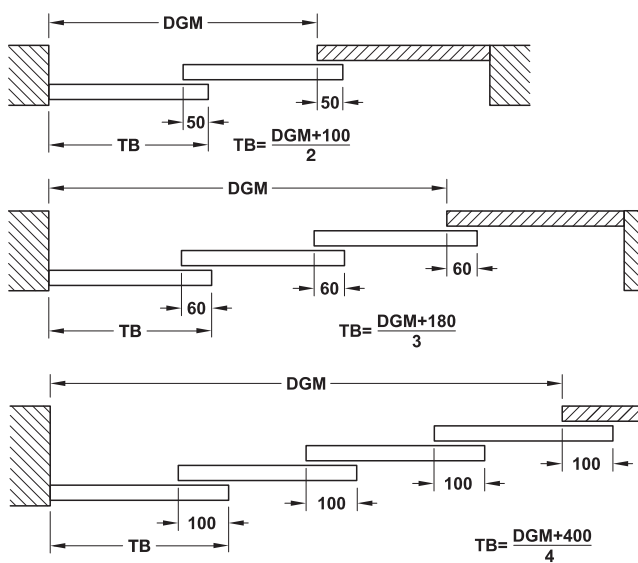


Slido Classic 100-A Sliding door fitting, stacking

For doors weights up to 100 kg

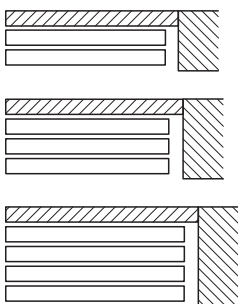


- Area of application: For stacking doors of 2-leaf, 3-leaf and 4-leaf systems
- Adjustment facility: Door height adjustable
- Installation: Ceiling installation
- Door width: 600–1,200 mm
- Door thickness: 35–50 mm

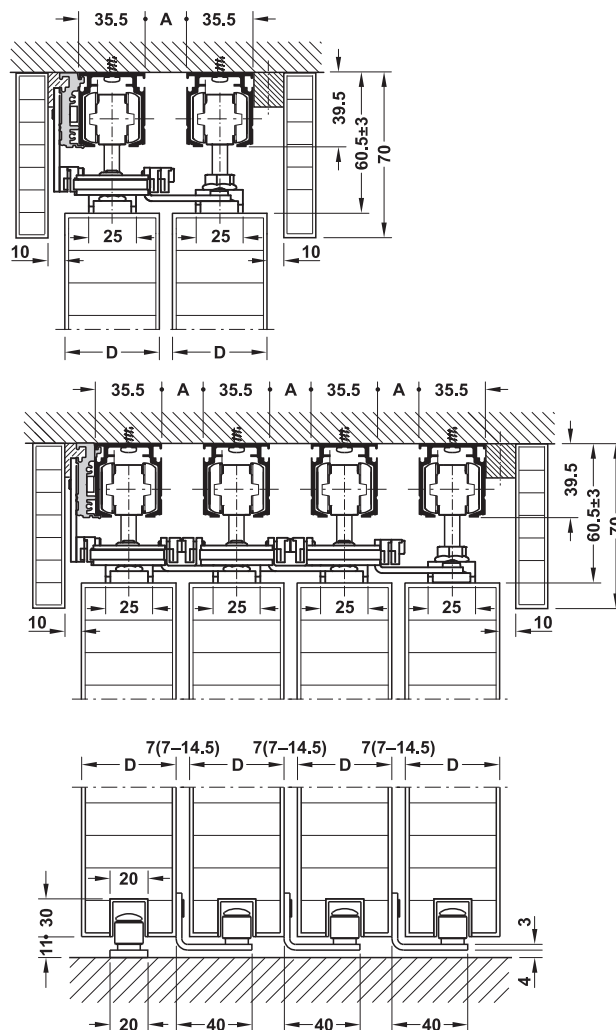


DGM = end-to-end length
 DGH = opening height
 TB = door width

Parking situation:



Ceiling installation



Track distance calculation: $A = D/2 - 3.5$
 A = track distance
 D = door thickness



7

→ Slido Classic 100-A, stacking Set

	Door weight	Cat. No.
For 2-leaf sliding doors, without running track	≤100	941.37.000
For 3-leaf sliding doors, without running track	≤65	941.37.001
For 4-leaf sliding doors, without running track	≤50	941.37.002

Note

Door width ≤1,800 mm and door thickness 35–50 mm, depending on approved door weight.

→ Classic 100-A Set components

		2-leaf	3-leaf	4-leaf
Running gear, 4 rollers, with ball bearing mounted plastic rollers		4 pieces	6 pieces	8 pieces
Support flange, for screw fixing, width 25 mm		4 pieces	6 pieces	8 pieces
Track stopper		2 pieces	2 pieces	2 pieces
Floor guide		1 piece	1 piece	1 piece
Guide roller		1 piece	2 pieces	3 pieces
Follower 1		1 piece	1 piece	1 piece
Follower 2		–	2 pieces	5 pieces
Follower 3		1 piece	1 piece	1 piece
Deflection unit, consists of 2 different deflection rollers		1 piece	2 pieces	3 pieces
Toothed belt with steel cord, width 5 mm		1 piece, length 3000 m	1 piece length 6000 m	1 piece length 9000 m

→ Tracks and accessories

		Material	Finish	Length mm	Cat. No.
Running track, not drilled		Aluminium	Silver coloured anodized	2000	940.97.722
				3000	940.97.732
				4000	940.97.742
				6000	940.97.762
Guide track, bottom, pre-drilled		Aluminium	Silver coloured anodized	1000	941.37.801
				2000	941.37.802

Mortise locks ▶ AH 2.35

Flush pull handles ▶ AH 7.214

Door handles for sliding doors ▶ AH 1.101
▶ AH 7.220