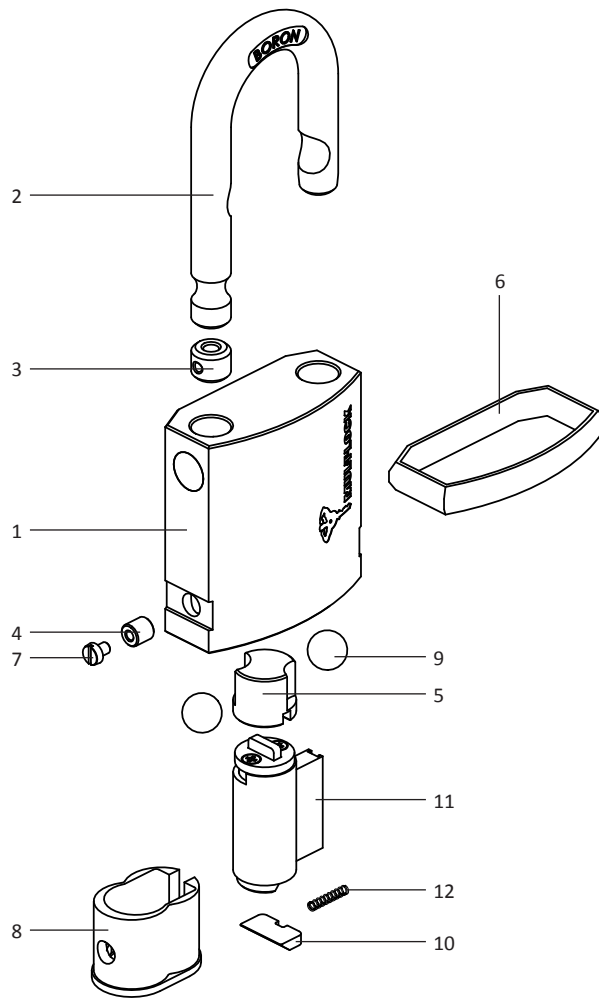


NE Series Padlock

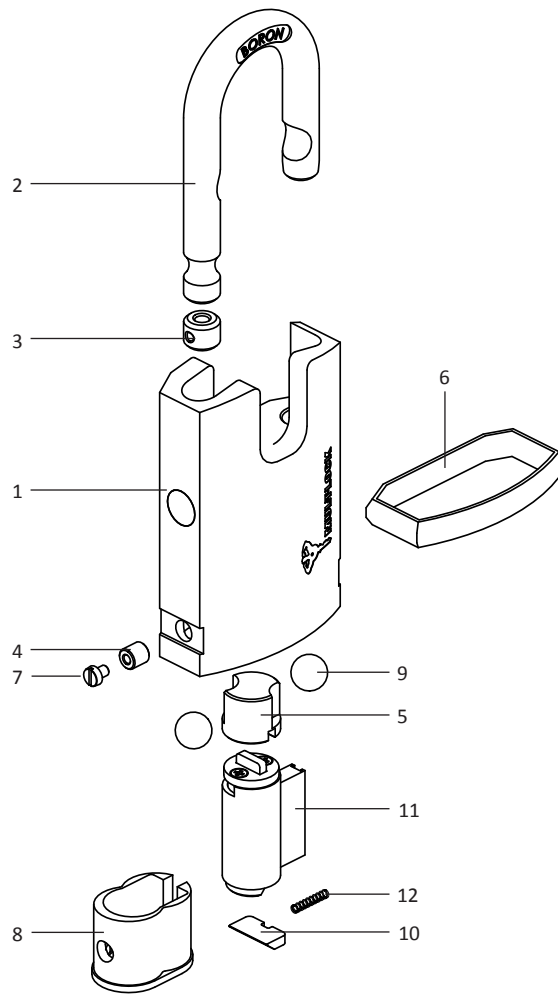
NE10L; NE12L; NE14L



No.	Part	Part number	No.	Part	Part number
1	Padlock body	10 - 28500141 12 - 28500161 14 - 28500181	7	Slotted head screw M3X4	31810304
2	Shackle	10 - 28500142 12 - 28500162 14 - 28500182	8	Cylinder holder	28500146
3	Shackle adaptor	10 - 28500147 12 - 28500167 14 - 28500187	9	Ball St. Steel	10 - 89400021 12 - 89400021 14 - 89400024
4	Threaded plug	10 - 28500148 12 - 28500168 14 - 28500188	10	Shutter	28500144
5	Activator cam	10 - 28500143 12 - 28500163 14 - 28500183	11	Cylinder assy	N.A
6	Bumper	10 - 28500134 12 - 28500164 14 - 28500164	12	Spring	28200150

NE Series Padlock

NE10H; NE12H; NE14H

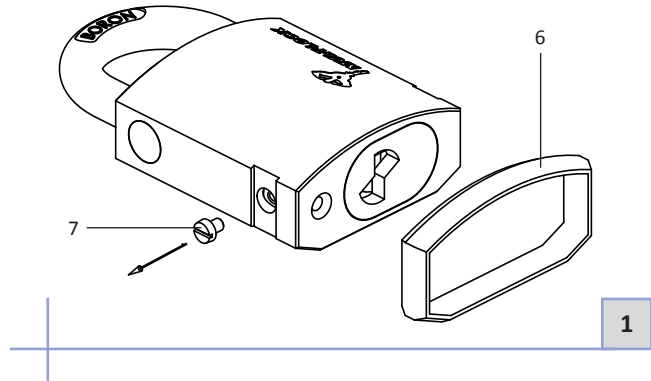


No.	Part	Part number	No.	Part	Part number
1	Padlock body	10 - 28500151 12 - 28500171 14 - 28500191	7	Slotted head screw M3X4	31810304
2	Shackle	10 - 28500142 12 - 28500162 14 - 28500182	8	Cylinder holder	28500146
3	Shackle adaptor	10 - 28500147 12 - 28500167 14 - 28500187	9	Ball St. Steel	10 - 89400021 12 - 89400021 14 - 89400024
4	Threaded plug	10 - 28500148 12 - 28500168 14 - 28500188	10	Shutter	28500144
5	Activator cam	10 - 28500143 12 - 28500163 14 - 28500183	11	Cylinder assy.	N.A
6	Bumper	10 - 28500134 12 - 28500164 14 - 28500164	12	Spring	28200150

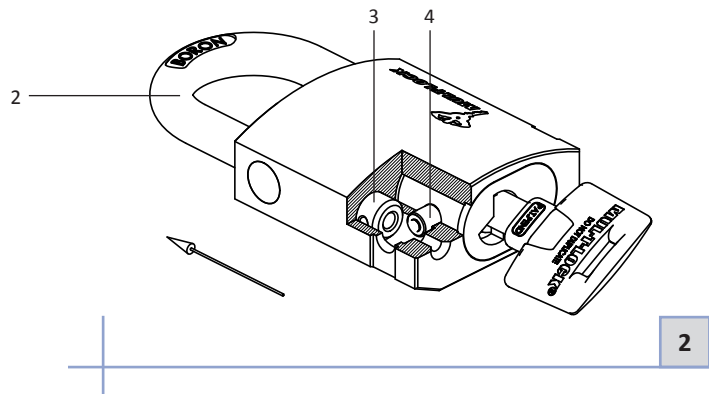
Service Instructions

Disassembly - NE10L, 12L, 14L; NE10H, 12H, 14H

- Remove bumper (6). Use flat screwdriver to remove slotted head screw (7).

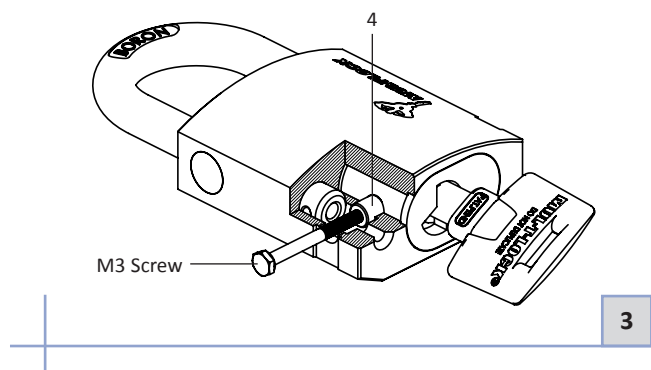


- Unlock the padlock with the operating key. Pull out the shackle (2) and shackle adaptor (3) until threaded plug (4) hole is not blocked.

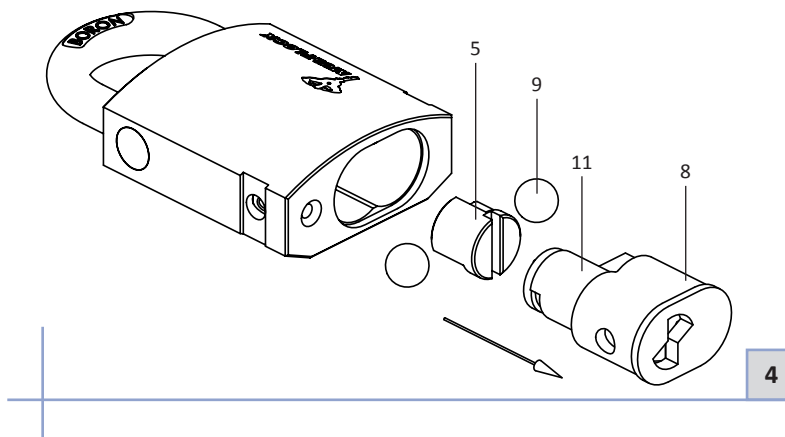


- Use standard M3 screw to remove the threaded plug (4).

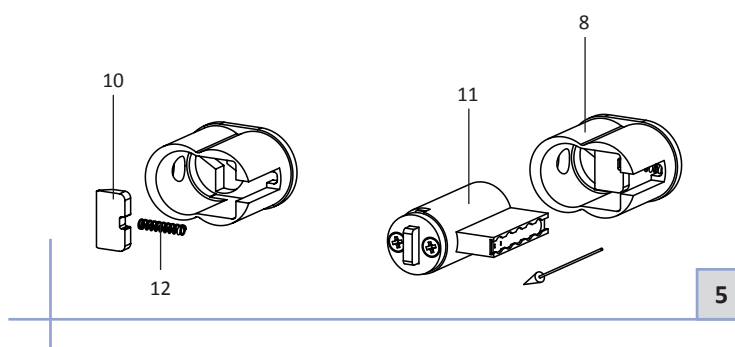
Note: For convenience removal/insertion of the threaded plug use long screw (15-20mm). Screw only few turns and pull it out.



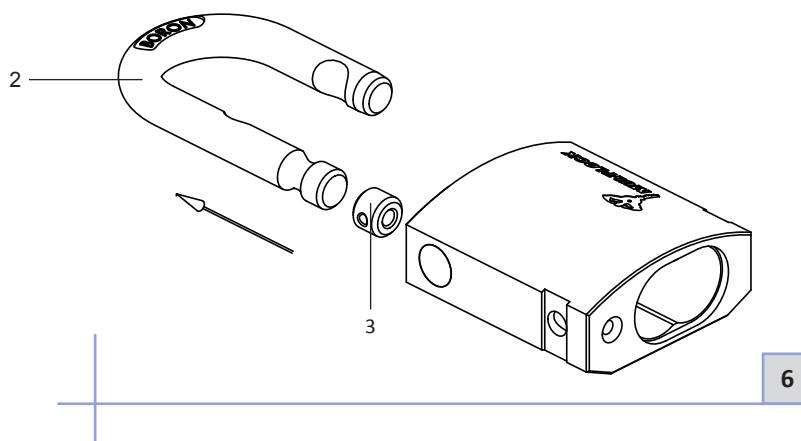
- Take out cylinder (11) and cylinder holder (8).
- Remove activator cam (5) and the two steel balls (9).



- Remove cylinder (11) from cylinder holder (8).
- Remove shutter (10) and spring (12).



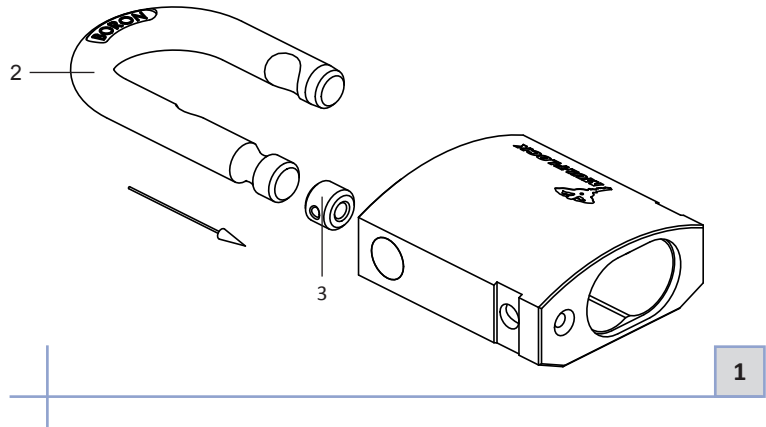
- Remove shackle (2) and shackle adaptor (3).



Service Instructions

Assembly - NE10L, 12L, 14L; NE10H, 12H, 14H

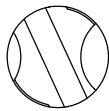
- Insert shackle adaptor (3) and shackle (2) into padlock body as illustrated.



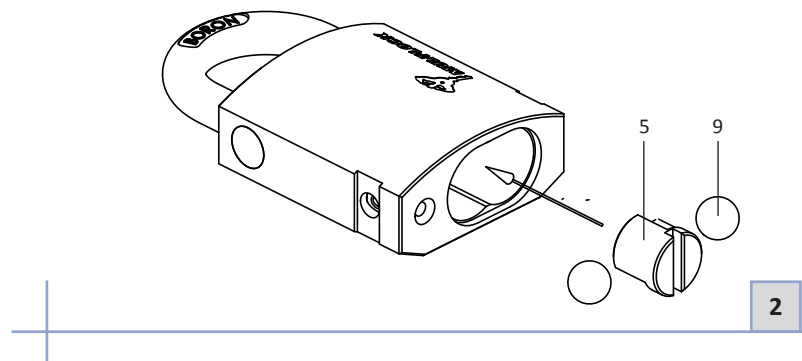
- Insert two steel balls (9).
- Insert activator cam (5) as described in diagram 5A.

Note: Activator cam (5) is not symmetrical.

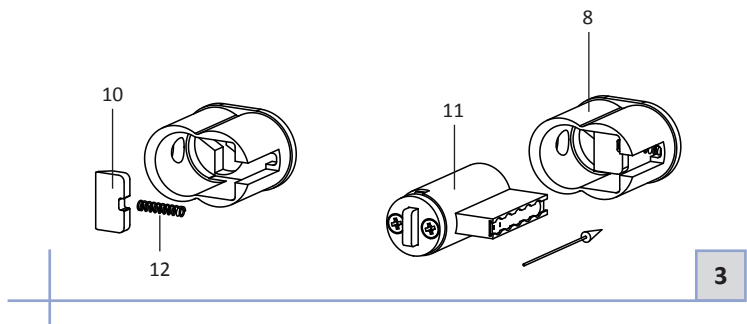
5A



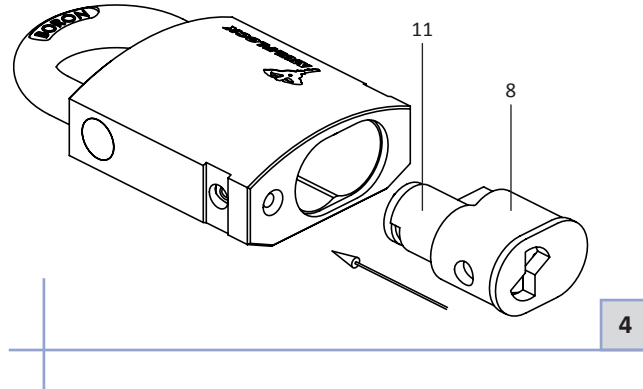
Smaller groove toward the longer leg of the shackle



- Assemble shutter (10) and spring (12) in cylinder holder (8).
- Insert cylinder (11).

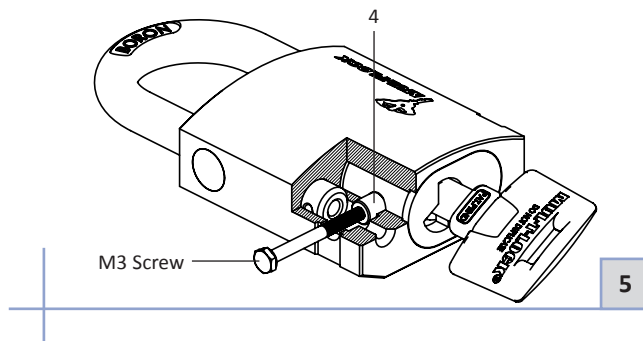


- Insert cylinder (11) with cylinder holder into padlock. With operating key verify proper operation of the padlock.

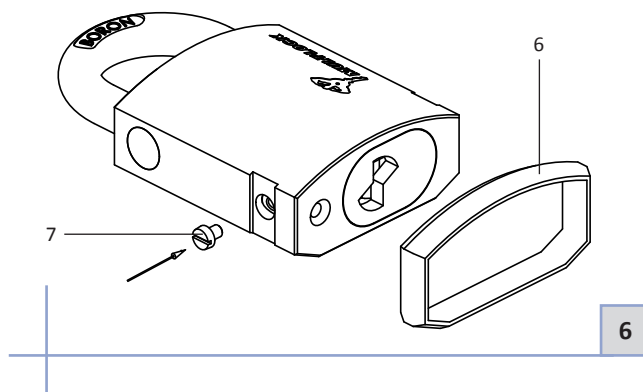


- Lift the shackle (2) and shackle adaptor (3) until threaded plug hole is not blocked.
- Push threaded plug (4) all the way in as illustrated. Remove the M3 screw.

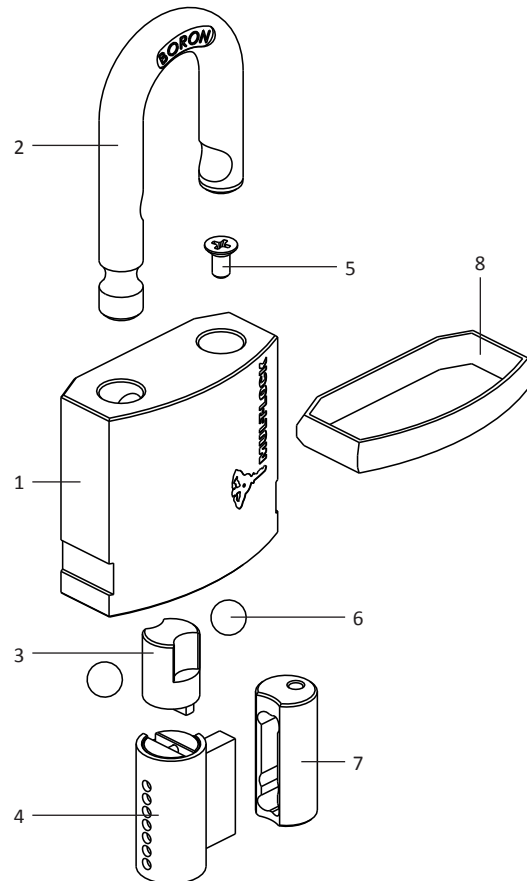
Note: For convenience removal/insertion of the threaded plug use long screw (min. 15-20mm). Screw only few turns.



- Lock the padlock and remove operating key.
- Use flat screwdriver to screw slotted head screw (7).
- Assemble bumper (6).

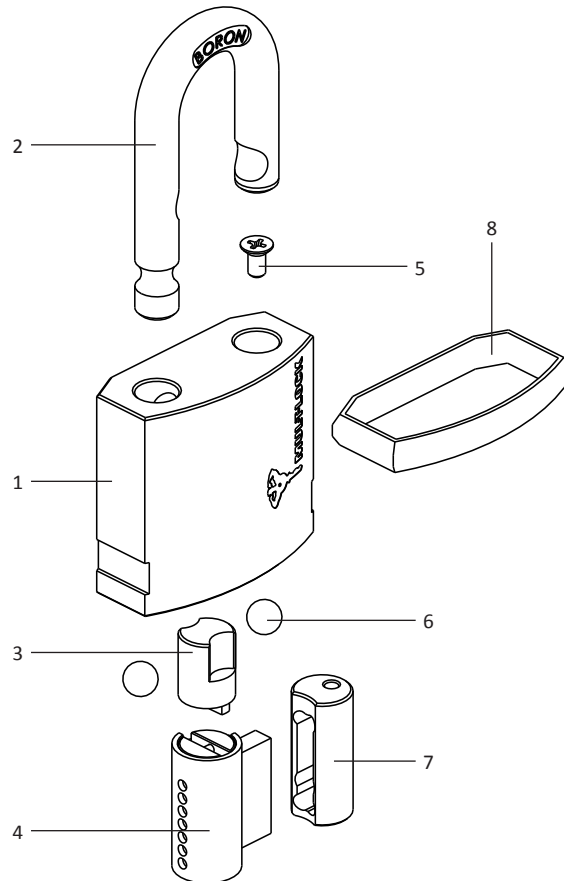


NE8G Padlock



No.	Part	Part number	No.	Part	Part number
1	Padlock body	28500121	5	Phillips head screw M4X8	31330408
2	Shackle	28500122	6	Ball St. Steel	89400020
3	Activator cam	28500123	7	Cylinder holder	28500113
4	Cylinder assy.	N.A.			

NE10G Padlock

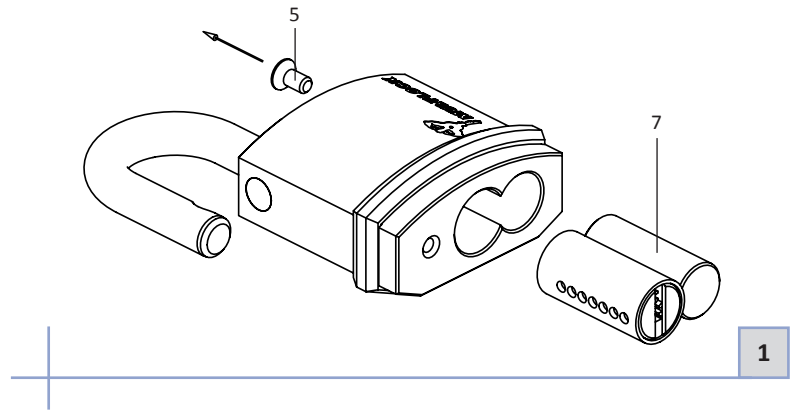


No.	Part	Part number	No.	Part	Part number
1	Padlock body	28500131	5	Phillips head screw M4X8	31330408
2	Shackle	28500132	6	Ball St. Steel	89400020
3	Activator cam	28500133	7	Cylinder holder	28500113
4	Cylinder assy.	N.A.			

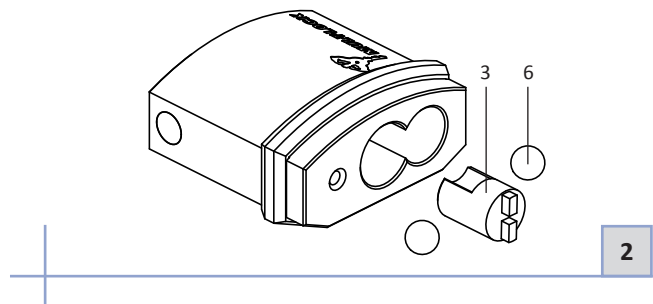
Service Instructions

Disassembly - NE8G; NE10G

- Unlock the padlock with operating key.
- Unscrew Phillips head screw (5).
- Take out cylinder (4) and cylinder holder (7).

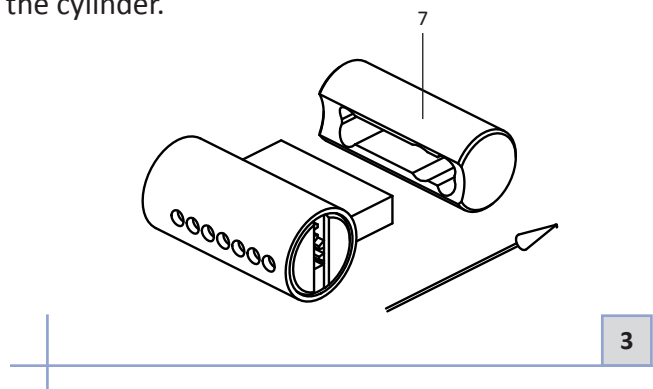


- Take out activator cam (3) and steel balls (6).
- Take shackle (2) out.



- Separate cylinder holder (7).

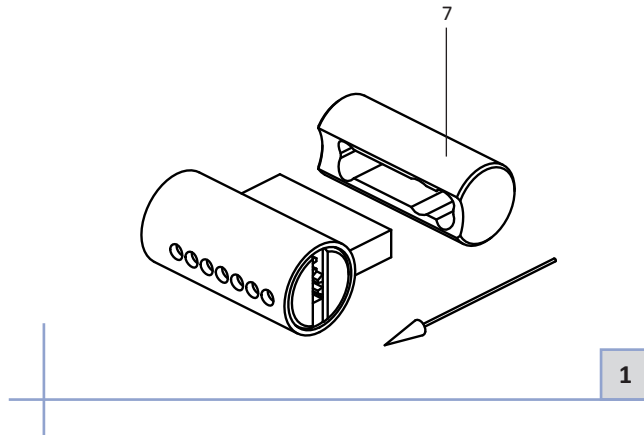
Note: At this stage it is possible to rekey the cylinder.



Service Instructions

Assembly - NE8G; NE10G

- Assemble cylinder holder (7).



- Insert shackle (2).
- Insert steel balls (6).
- Insert activator cam (3) with smaller groove toward the longer leg of the shackle. See FIG 3a.

Note: Activator cam (3) is not symmetrical.

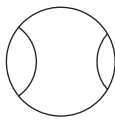
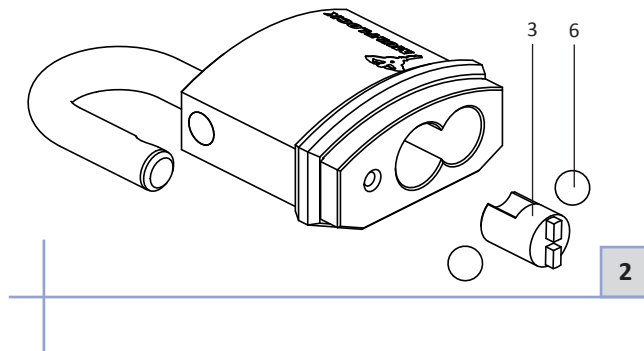
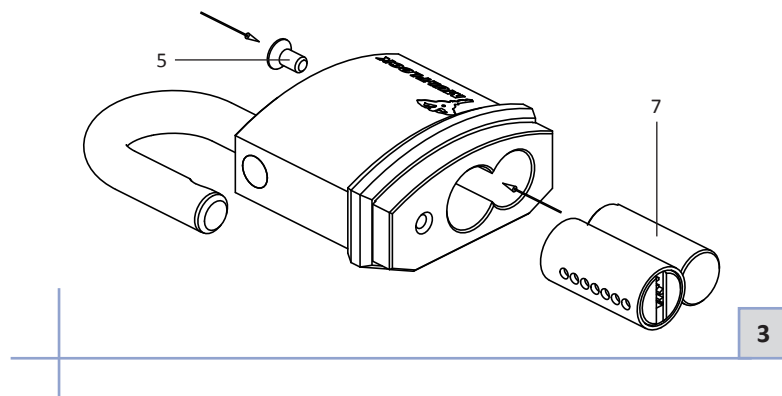


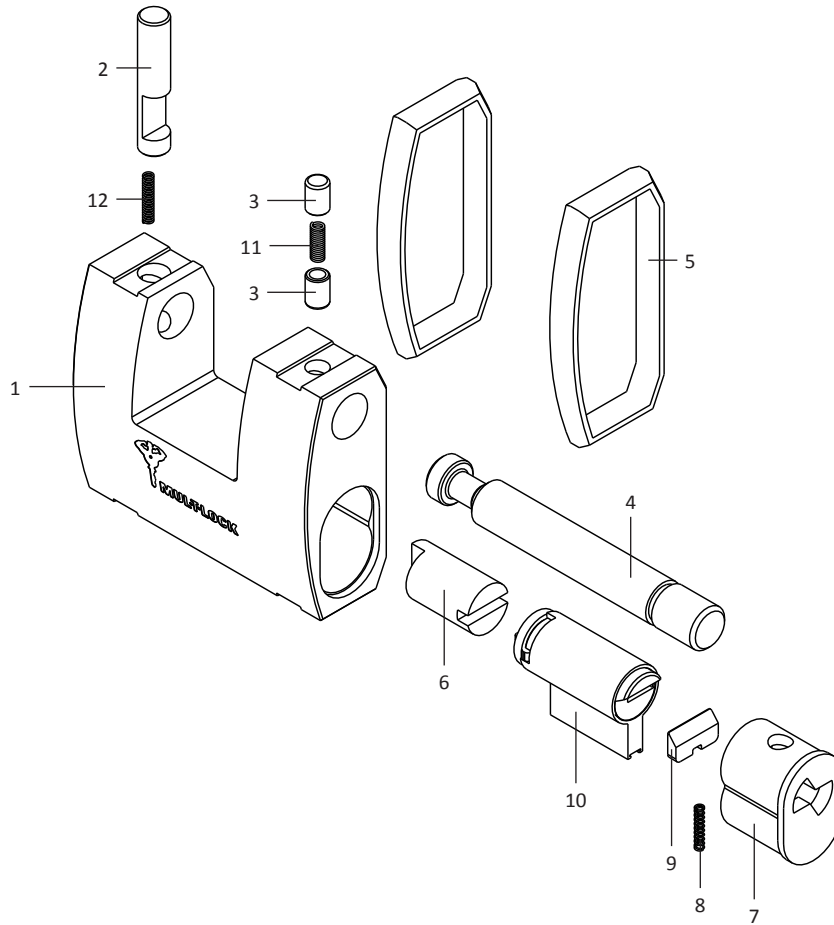
FIG 3a



- Insert cylinder (4) and cylinder holder (7).
- Tighten Phillips head screw (5).
- Insert operating key and verify proper operation of the padlock.



SBNE12 - Sliding Bolt

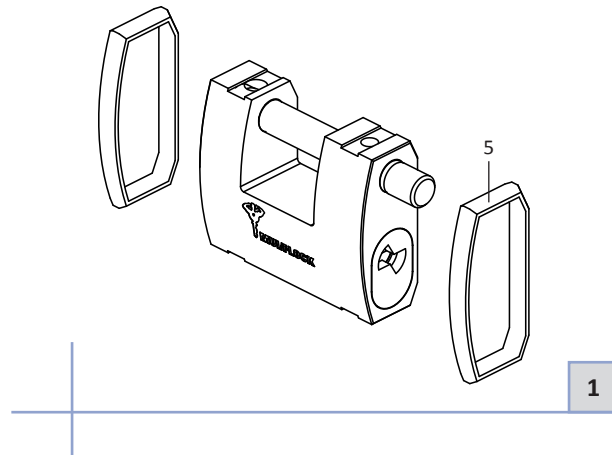


No.	Part	Part number	No.	Part	Part number
1	Padlock body	28500201	7	Cylinder holder	28500146
2	Latch	28500206	8	Shutter spring	28200150
3	Stopper pin	28500217	9	Shutter	28500144
4	Bolt	28500202	10	Cylinder	N.A.
5	Bumper	28500164	11	Stopper spring	28500208
6	Activator	28500203	12	Latch spring	28500207

Service Instructions

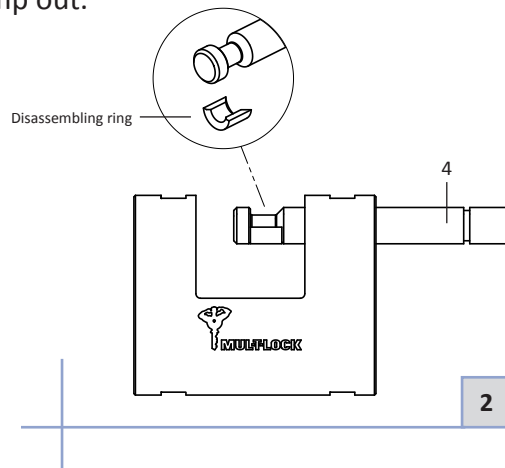
Disassembly - SBNE12

- Remove the 2 bumpers (5).

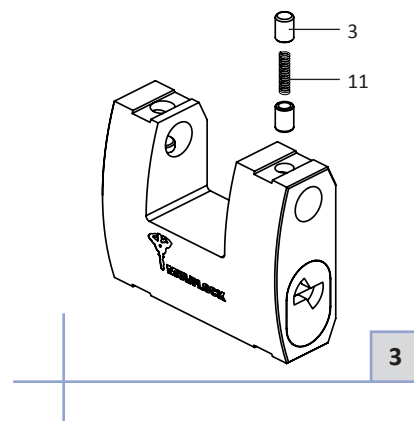


- Unlock the padlock with operating key.
- Mount the disassembling ring on the bolt (as illustrated) and remove the bolt (4) by pulling it out.

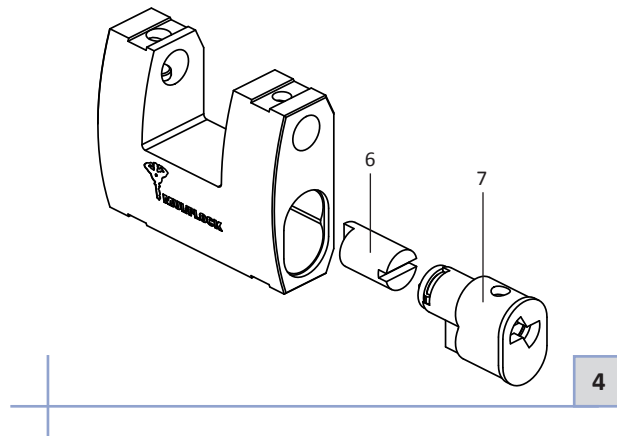
Note: Pay attention as the stopper pin might jump out.



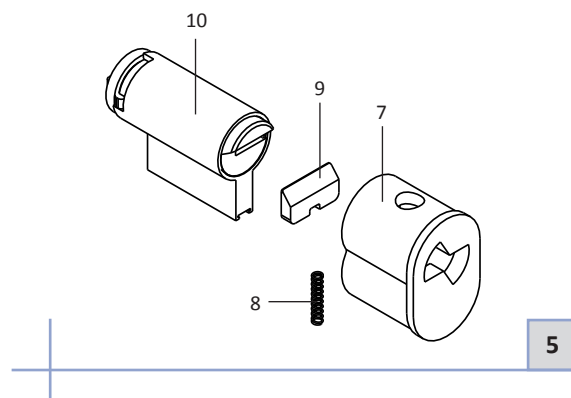
- Take out the stopper pins (3) and the spring (11).



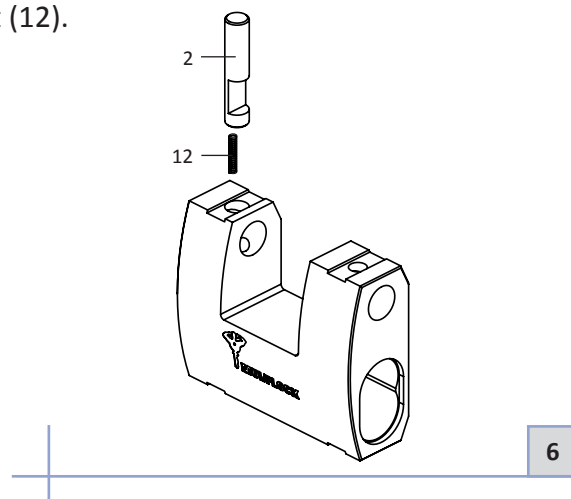
- Pull out the cylinder together with the cylinder holder (7).
- Pull out the activator (6).



- Take out the cylinder (10) from cylinder holder (7).
- Note:** Pay attention to shutter (9) and shutter spring (8).



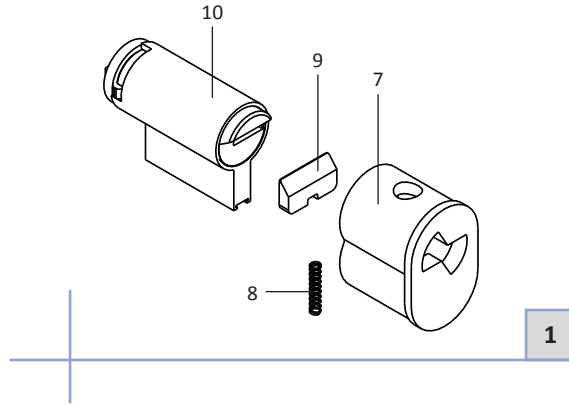
- If required take out latch (2) and latch spring (12).



Service Instructions

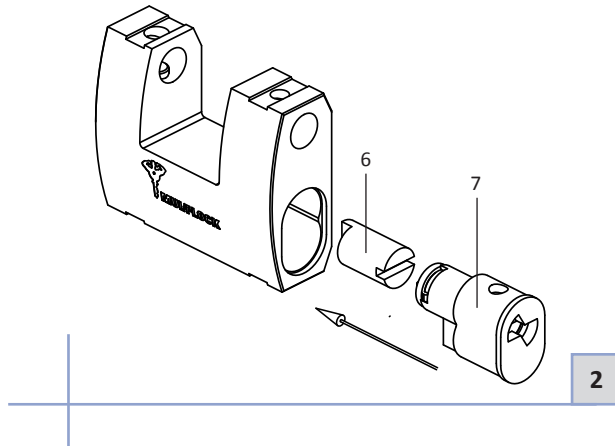
Assembly - SBNE12

- Assemble shutter (9) and shutter spring (8) into cylinder holder.
- Insert the cylinder (10) into cylinder holder (7).

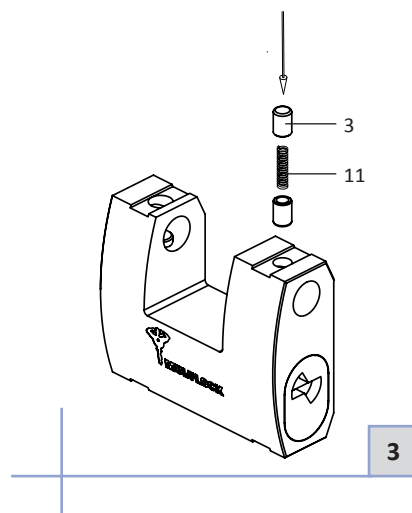


- Insert activator (6) into lock body.
- Insert the cylinder (10) together with the cylinder holder (7).

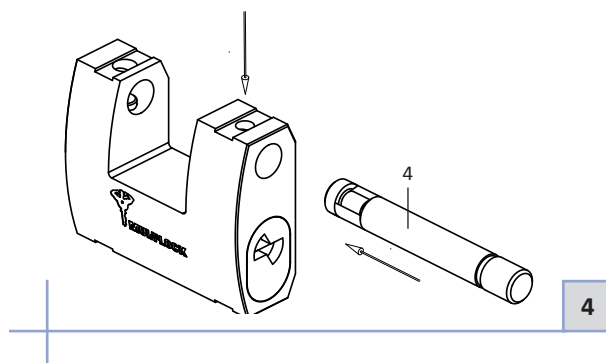
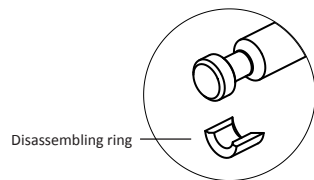
Note: Press latch (2) to verify engagement of the activator.



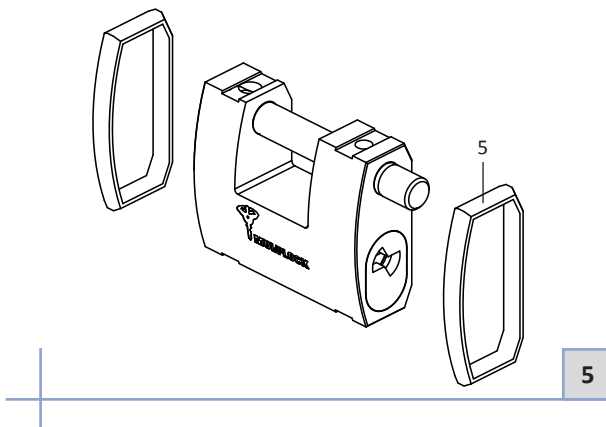
- Insert the stopper pins (3) and spring (11).
- Press and hold stopper pin.
- While pressing insert operating key and verify proper operation of the lock.



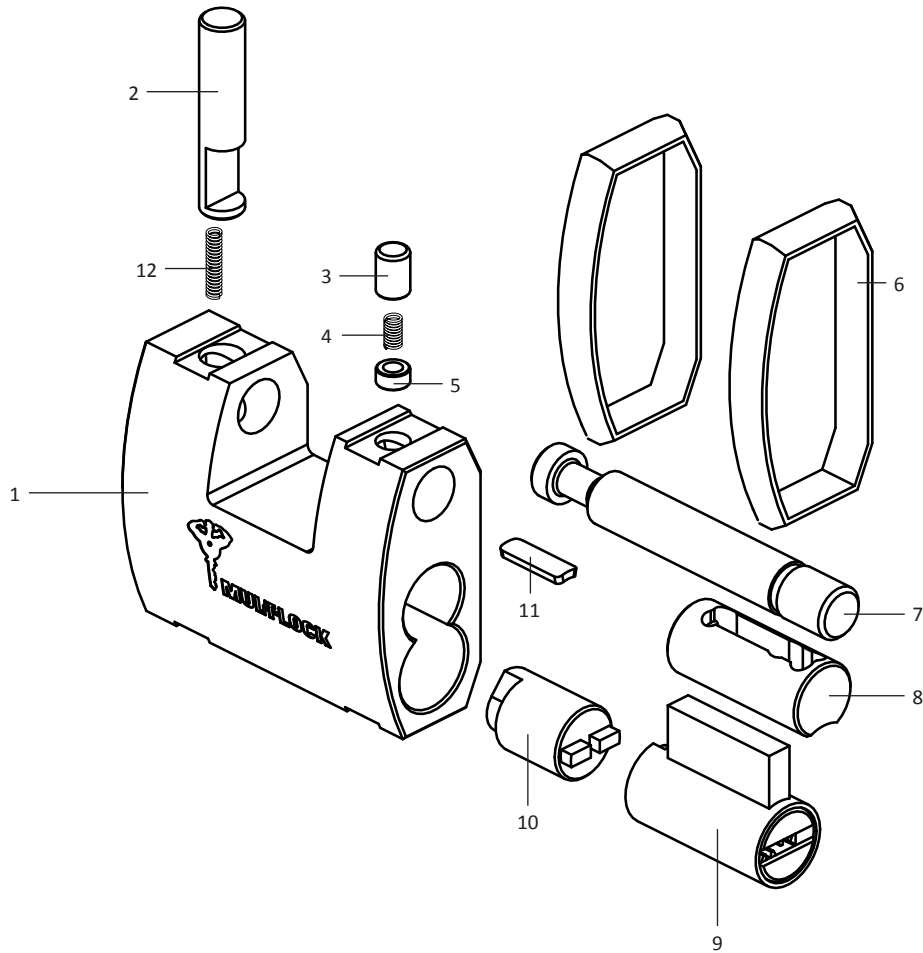
- Mount the disassembling ring on the bolt (as illustrated).
- While pressing the stopper pin push the bolt (4) in.
- Verify proper operation of the lock.



- Mount the 2 bumpers (5).



SBNE10 - Sliding Bolt

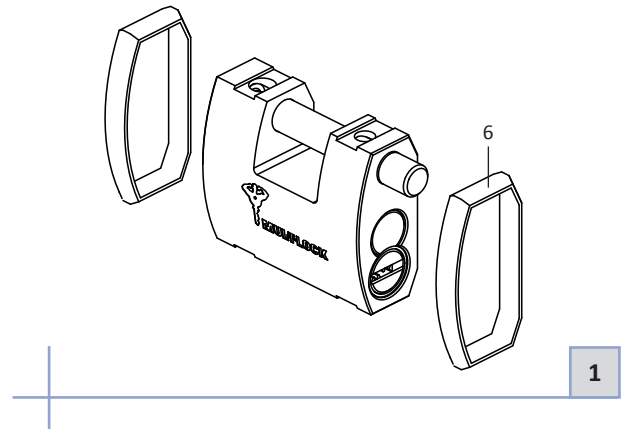


No.	Part	Part number	No.	Part	Part number
1	Padlock body	28500211	7	Bolt	28500212
2	Latch	28500216	8	Cylinder holder	28500113
3	Stopper pin	28500217	9	Cylinder	N.A.
4	Spring	28500209	10	Activator	28500213
5	Pin	28500218	11	Reinforcement plate	28500214
6	Bumper	28500134	12	Latch spring	28500216

Service Instructions

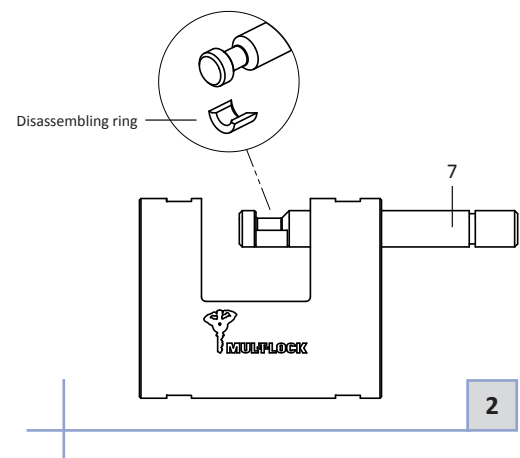
Disassembly - SBNE10

- Remove the 2 bumpers (6).

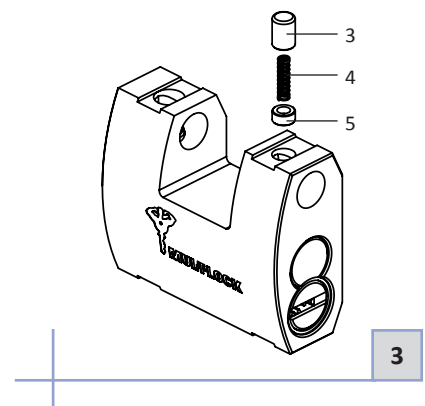


- Unlock the padlock with operating key.
- Mount the disassembling ring on the bolt (as illustrated) and remove the bolt (7) by pulling it out.

Note: Pay attention to the stopper pin as it might jump out.

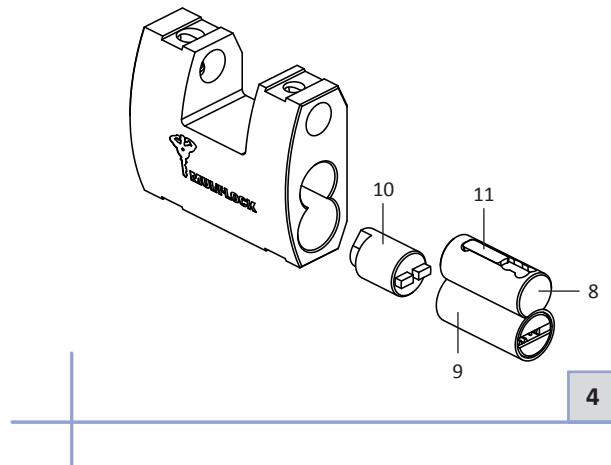


- Take out the stopper pins (3,5) and the spring (4).

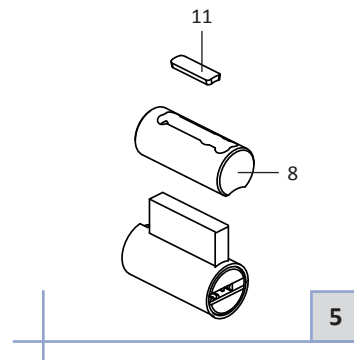


- Pull out the cylinder (9) together with the cylinder holder (8).
- Pull out the activator (10).

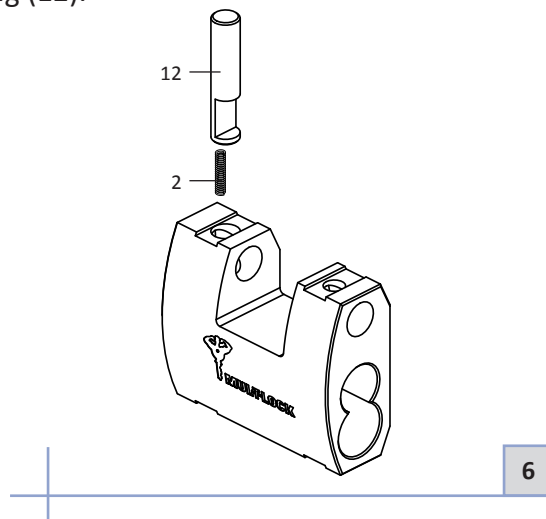
Note: Pay attention to the reinforcement plate (11)



- Take out the cylinder holder (8) and reinforcement plate (11).



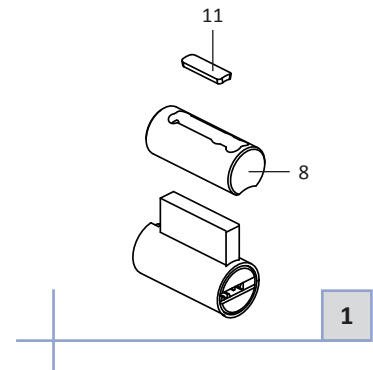
- If required take out latch (2) and latch spring (12).



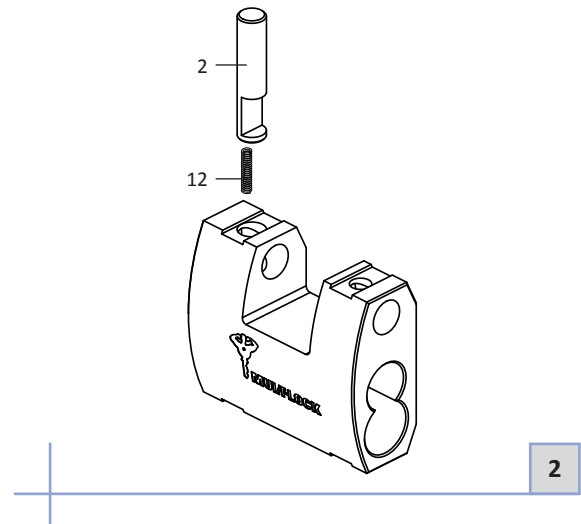
Service Instructions

Assembly - SBNE12

- Assemble cylinder holder (8) and reinforcement plate (11).

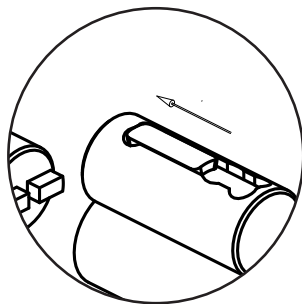


- Assemble latch spring (12) and latch (2).

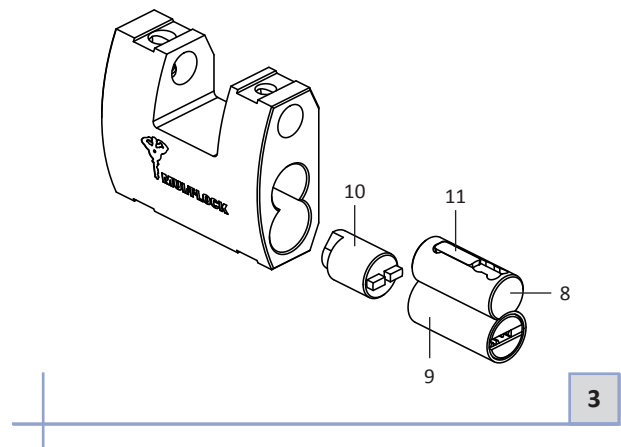


- Insert the activator (10).
- Insert the cylinder (9) together with the cylinder holder (8).
- Verify engagement of the activator with the latch.

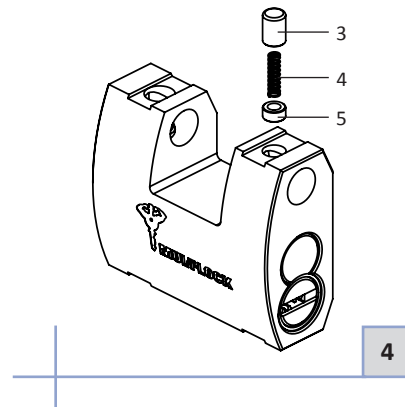
Note: Place reinforcement plate (11) as illustrated.



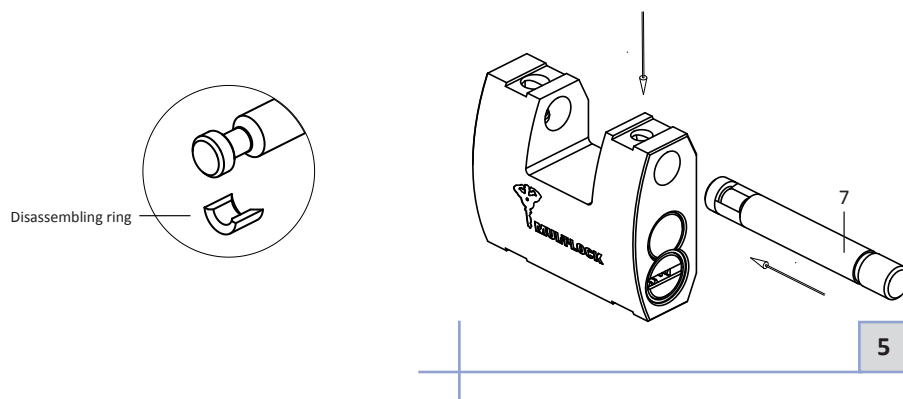
Reinforcement plate location



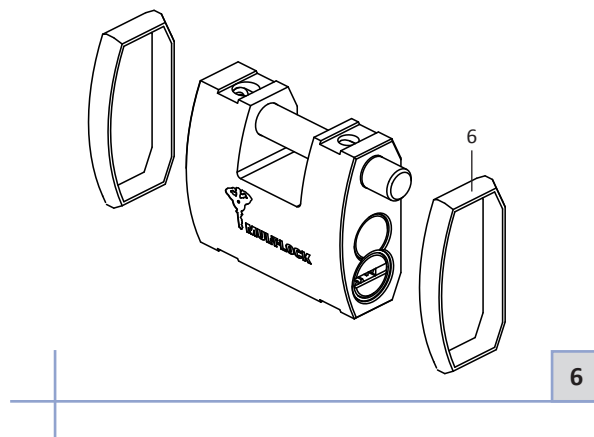
- Insert pin (5), spring (4) and stopper pins (3).
- Press and hold the stopper pins.
- While pressing insert operating key and verify proper operation of the lock.



- Mount the disassembling ring on the bolt (as illustrated).
- While pressing the stopper pin push the bolt (7) in.
- Verify proper operation of the lock.

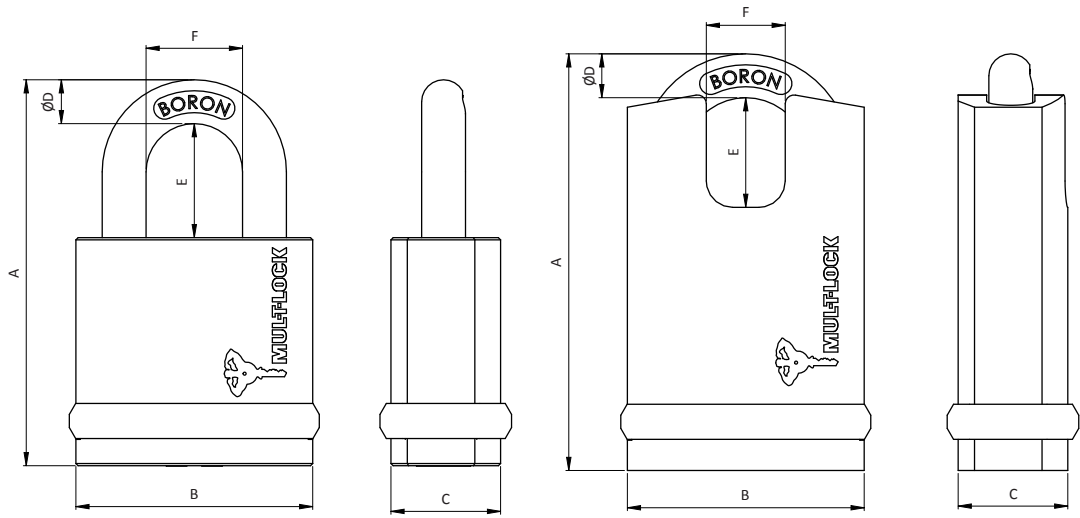


- Mount the 2 bumpers (6).



Dimensions

NE, NEG

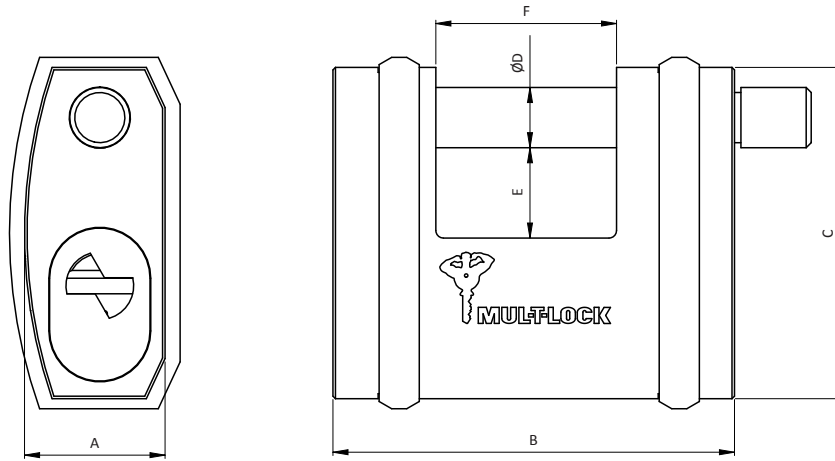


Type	A	B	C	D	E	F
NE8G	87	54	25	8	27	24
NE10G	88	54	25	10	26	22
NE10L	95	54	25	10	25	28
NE10H	95	54	25	10	25	18
NE12L	101	66	28	12	25	30
NE12H	101	66	28	12	25	21
NE14L	105	66	28	14	26	32
NE14H	105	66	28	14	26	21

All measurements are in millimetres

Dimensions

SBNE



Type	A	B	C	D	E	F
SBNE10	25	64	54	10	9	26
SBNE12	28	80	66	12	18	36

All measurements are in millimetres